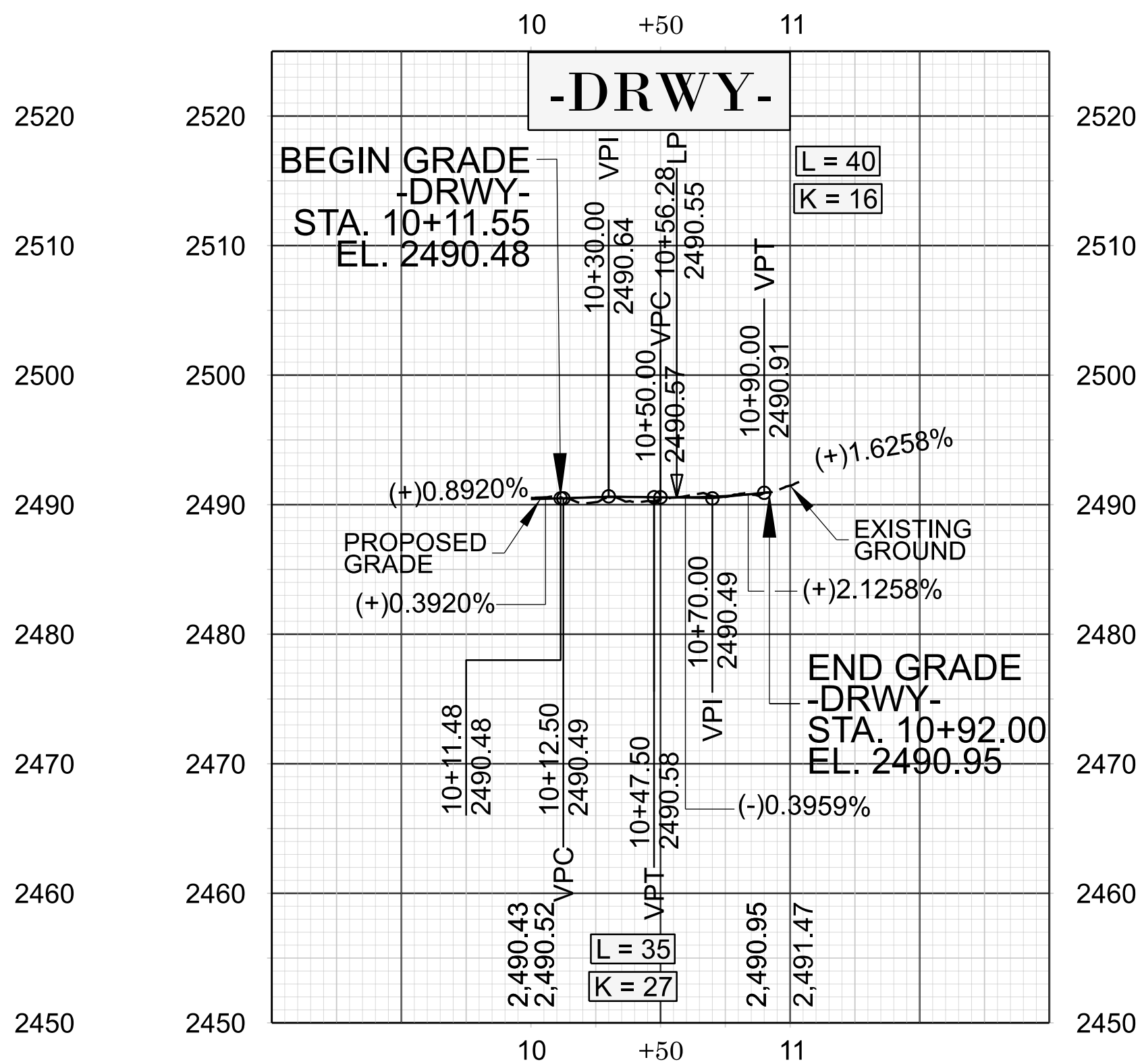
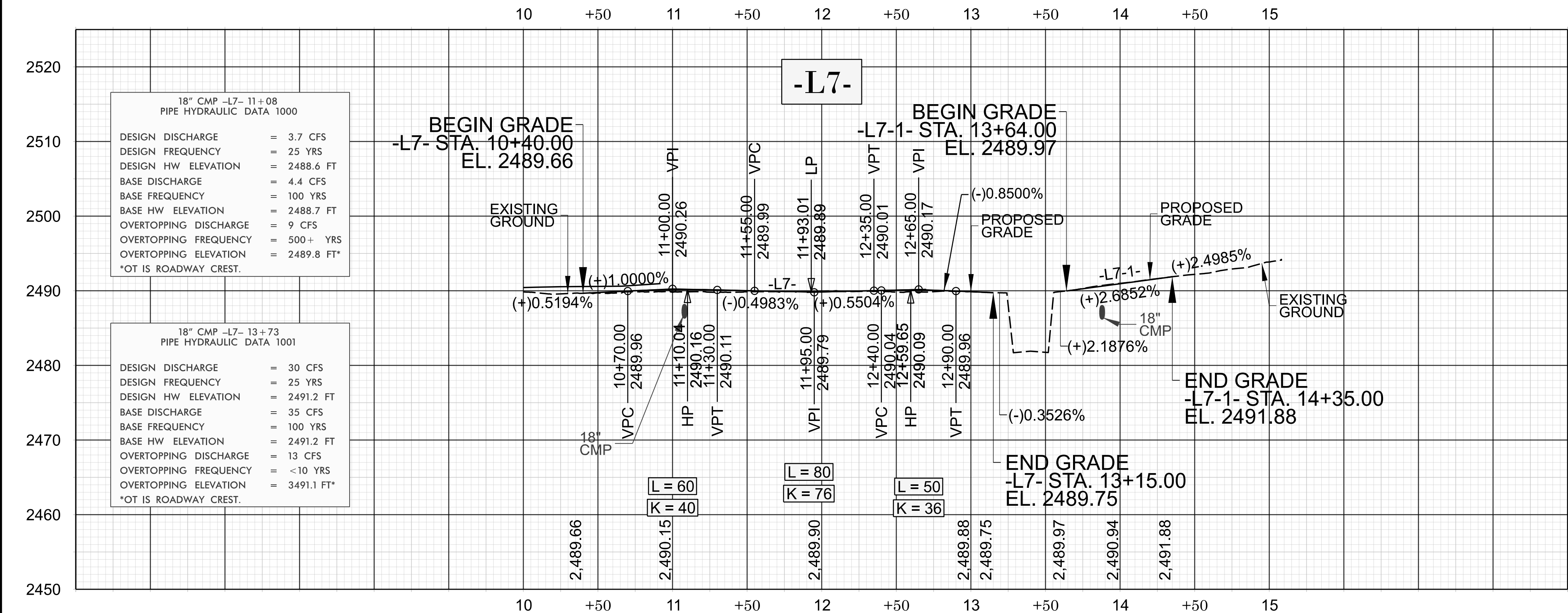


CUR DATA -L7-	
Plc 12+35.01	Plc 14+72.71
$\Delta c = 14^{\circ}13'28.2''$ (LT)	$\Delta c = 48^{\circ}56'40.5''$ (RT)
$D = 08^{\circ}59'40.7''$	$D = 29^{\circ}22'56.8''$
$Lc = 158.14$	$Lc = 166.58$
$Tc = 79.48$	$Tc = 88.75$
$R = 637$	$R = 195$
$SE = 0.040$	$SE = 0.06$
$RO = 68$	$RO = 68$

CUR DATA -DRWY-	
Plc 10+36.23	
$\Delta c = 34^{\circ}22'43.0''$ (LT)	
$D = 71^{\circ}37'11.0''$	
$Lc = 48.00$	
$Tc = 24.75$	
$R = 80$	



REVISIONS

DF18314.2045066

FINAL 10

NORTH CAROLINA
DEPARTMENT OF TRANSPORTATION
HENDERSON COUNTY

HIGHWAY DIVISION 14

ROADWAY DESIGN
ENGINEER

2/26/2025

SEAL
039234

ENGINEER
MARK HONEYCUTT

Signed by
T. H. Honeycutt

DOCUMENT NOT CONSIDERED FINAL
UNLESS ALL SIGNATURES COMPLETED

HYDRAULICS
ENGINEER

3/26/2025

SEAL
049338

ENGINEER
ERIC P. AADIAND

Signed by
Eric P. Aadiand

1519856 PREPARED BY

KCA

KISINGER CAMPO
& ASSOCIATES

NC FIRM LICENSE No: C-1506
301 Fayetteville St.,
Suite 1500
Raleigh, NC 27601
(919)882-7839